

# Technical Access Guide

This document provides guidance on how to set up and use internet browsers for effective use of the FIFA Transfer Matching System.

## Contents

Browser Support.....	2
Cache Clearance.....	2
Security Settings.....	5

## Document History

Version	Comment	Author	Date
1	<i>Initial version created</i>	<i>James Holroyd</i>	<i>12.10.2010</i>

## Browser Support

TMS has been developed to run optimally on the following browsers:

- Internet Explorer version 7
- Mozilla Firefox version 2

It should also be possible to use more recent version of these browsers (e.g. Internet Explorer 8 or Firefox 3.6) and TMS advises its users to avoid security risks by regularly installing updates for either browser from the manufacturers' homepage.

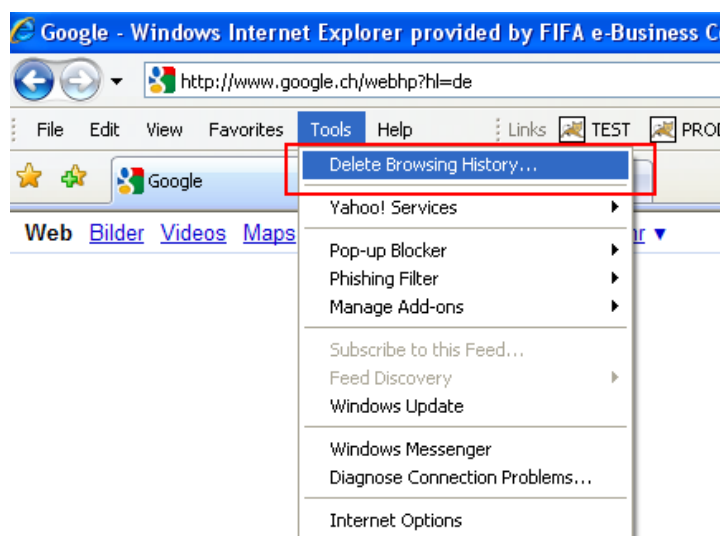
**Important note:** the full functionality of TMS cannot be guaranteed when accessing the system through older versions of Internet Explorer / Firefox or through other browsers (e.g. Chrome and Safari)

## Cache Clearance

When new features are introduced to TMS, it is often necessary to clear out any old information stored in the browser's cache in order to be able to successfully use the new features.

### Internet Explorer version 7

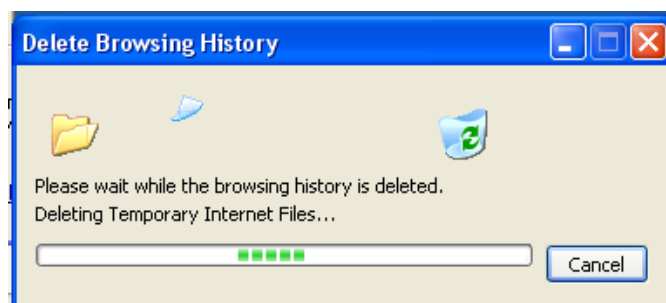
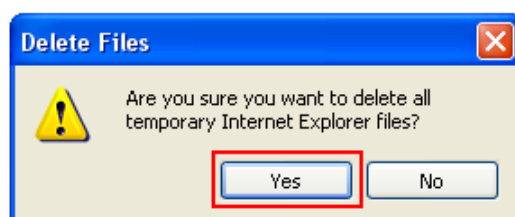
The cache can be cleared by going to Tools and selecting 'Delete Browsing History...'



Once the 'Delete Browsing History' window appears, select 'Delete files...' in section 'Temporary Internet Files'



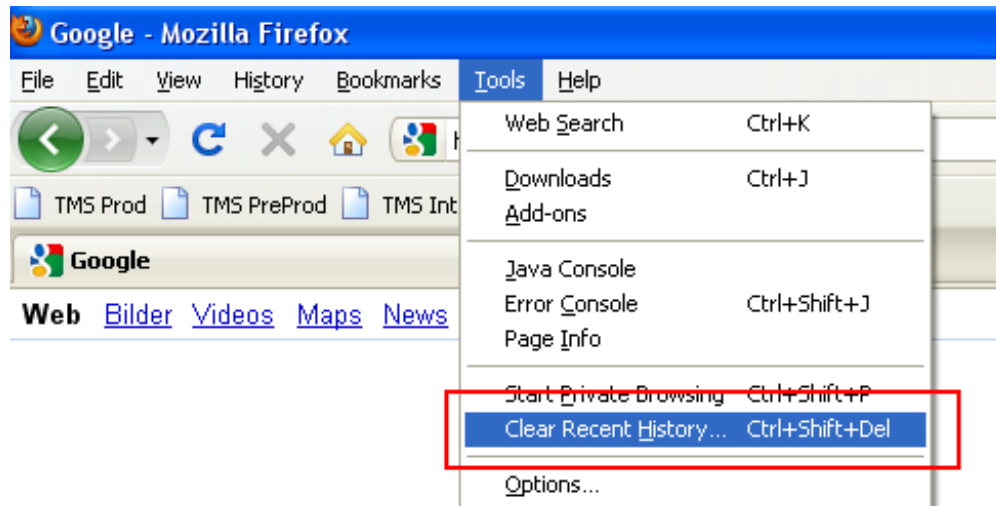
Finally, confirm that you wish to delete all temporary files



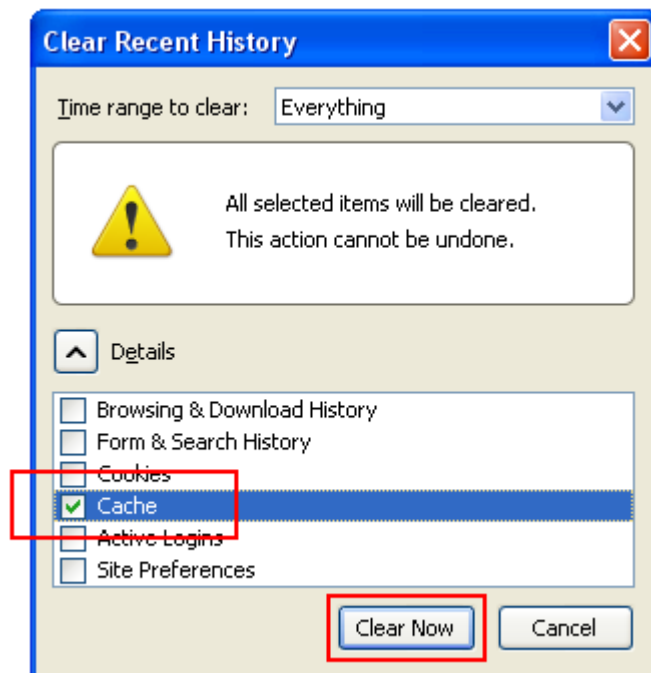
Once all temporary files have been deleted, you are ready to access all of the available TMS functions.

## Mozilla Firefox version 3.6

The cache can be cleared by going to 'Tools' and selecting 'Clear Recent History...'



Once the 'Clear Recent History' window appears, select 'Cache' and click on 'Clear Now'



Once the Cache is cleared, you are ready to access all of the available TMS functions.

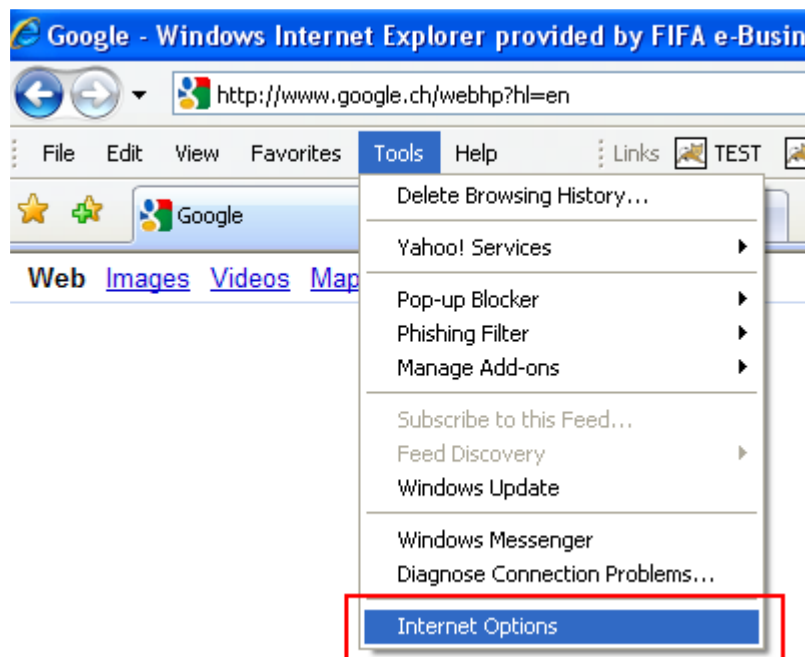
## Security Settings

To ensure that the information in TMS is handled securely, any data which is either sent to or received from the TMS database is encrypted. This means that even if non-authorized users were able to intercept the information, they would not be able to read it.

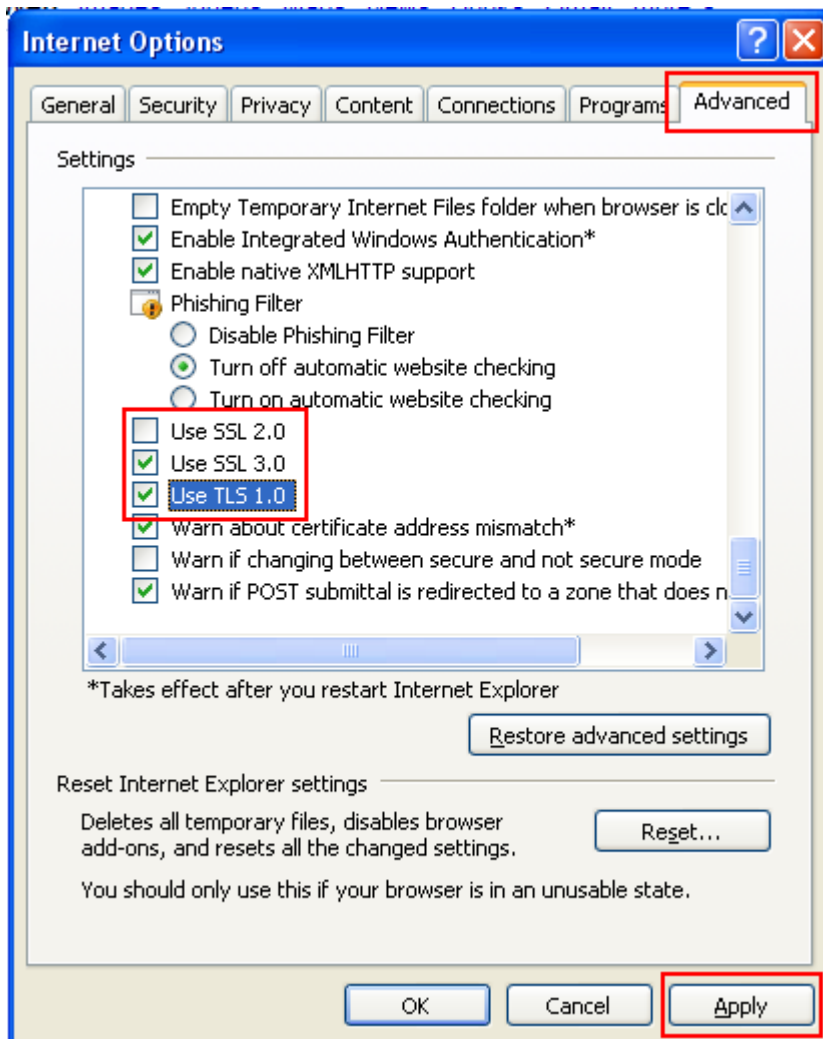
Encryption techniques are being developed regularly and in order to stay up-to-date with the latest versions, TMS must be adapted from time to time to work with 'strong' encryption protocols. As of October 2010, the encryption versions SSL 3.0 and TSL 1.0 are considered 'strong'

## Internet Explorer version 7

The security setting can be accessed by going to 'Tools' and 'Internet Options'



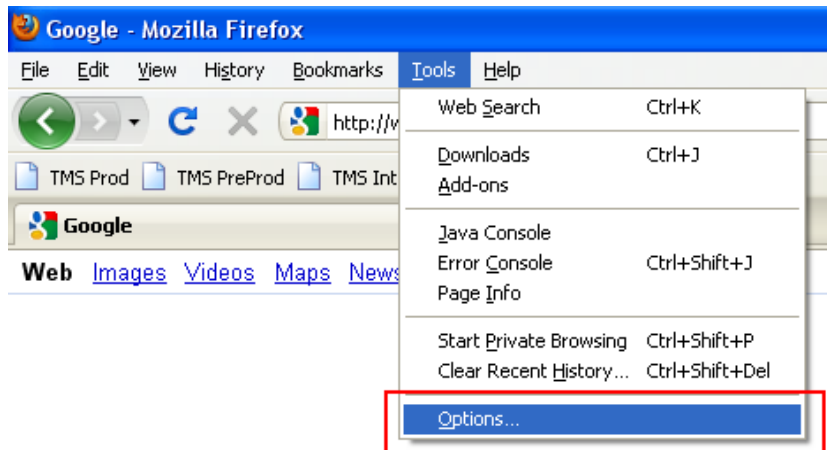
On the 'Internet Options' window, go to the 'Advanced' tab and scroll down to the bottom of the selection screen.



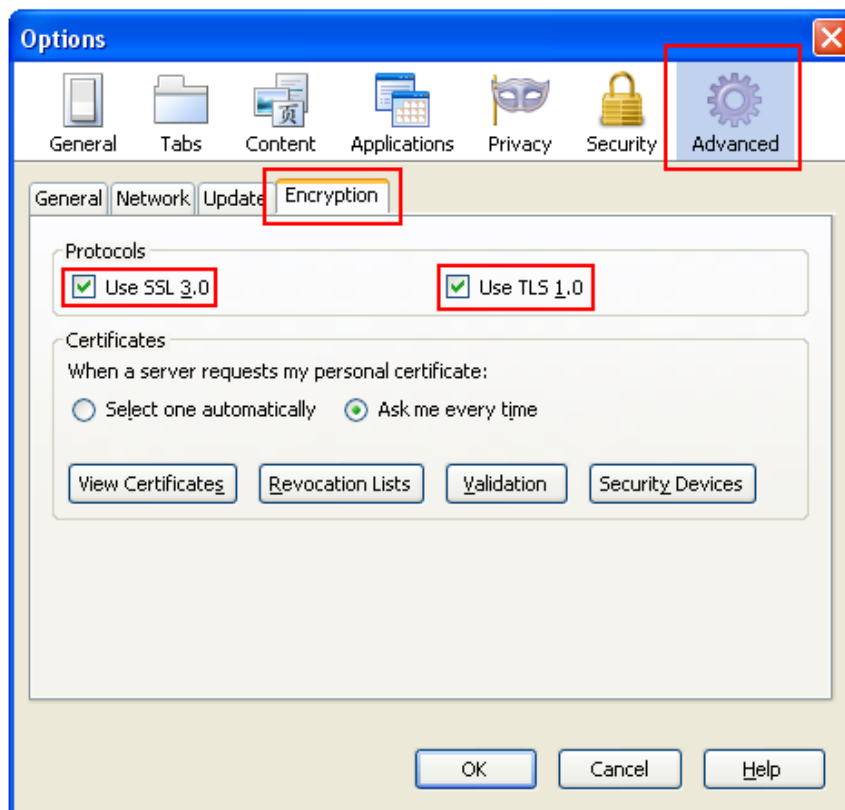
De-select 'Use SSL 2.0' and select 'Use SSL 3.0' and 'Use TSL 1.0' before saving your changes.

## Mozilla Firefox version 3.6

The security setting can be accessed by going to 'Tools' and 'Options...'



On the 'Options' window, go to the 'Advanced' section and select the 'Encryption' tab.



Select 'Use SSL 3.0' and 'Use TSL 1.0' before saving your changes.